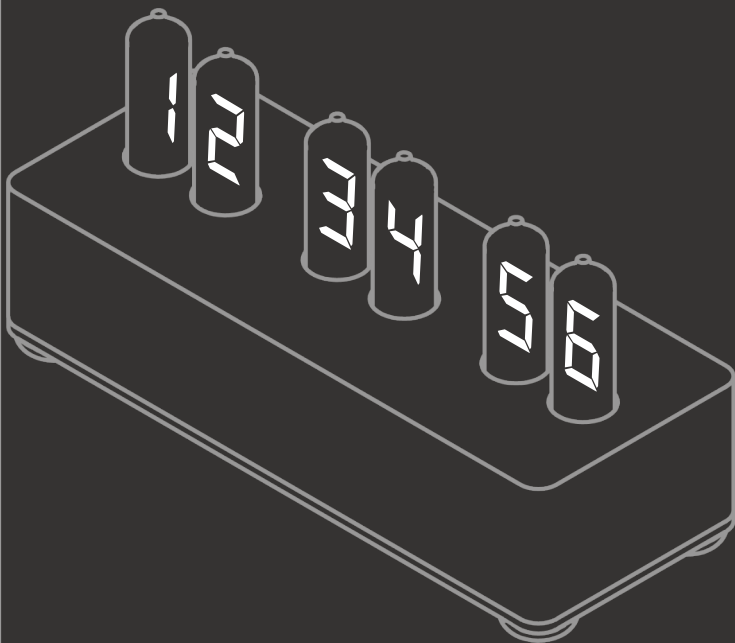


User manual

TubeTime



By **qnop**

Content

1 - Safety information	03
2 - Features and functions	03
3 - Parts and control buttons	04
4 - Instalation	05
5 - Opertation	06
5.1 - Setting up Wi-Fi connection	06
5.2 - Removing Wi-Fi connection	09
5.3 - Setting time manually	10
5.4 - Setting Brightness intensity level	11
6 - Cleaning and maintenance	12
7 - Technical information	13
8 - Warranty information	14

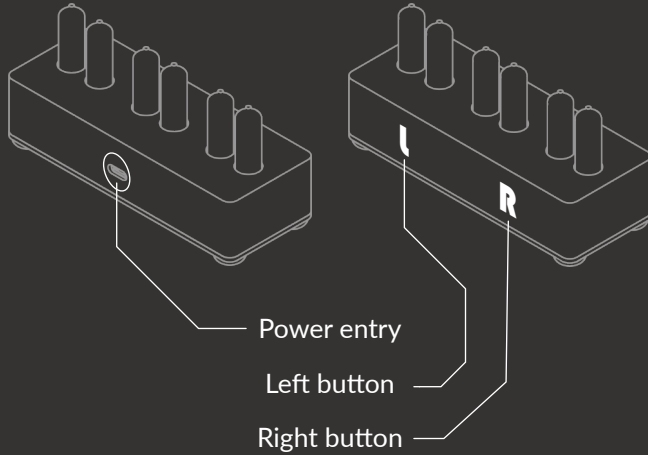
1 - Safety information:

- Keep away form fire and/or flammable substances.
- Always use a power supply of 5 Volt with a minimum of 5 Watt.
- Don't get the device wet.
- When the device gets dammaged, disconnect from power.
- Be careful when handling the product not to damage the glass tubes.
- Indoor use only.

2 - Features and functions:

- Display time
- Sync time through wifi
- Change brightness intensity

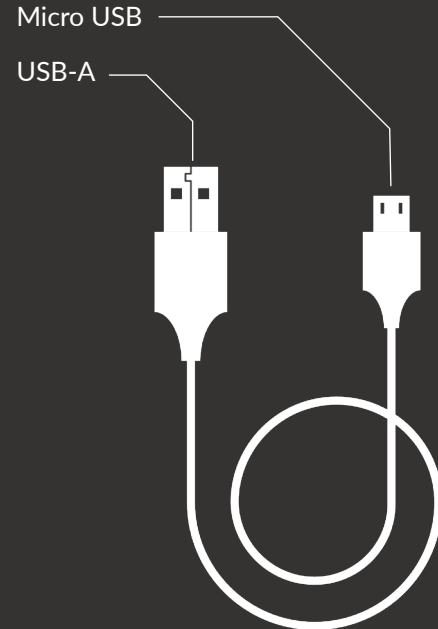
3 - Parts and control buttons:



- Power entry, micro USB
- Left button, non visible touch sensors
- Right button, non visible touch sensors

4 - Instalation:

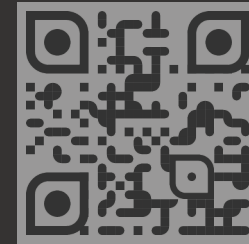
- Plug the USB-A side of the cable in a 5 Volt AC/DC adapter with a output of 2 Ampere.
- Plug the Micro USB side in the device.
- Plug the ac/dc adapter in a power socket.



5 - Operation:

5.1 - Setting up Wi-Fi connection:

- When powered on for the first time (or when there is no Wi-Fi configuration set), a Wi-Fi access point will be turned on for 10 minutes.
- within this time you can connect your smartphone (or tablet / laptop) with the access point using the following password: **lookatthetime**



- When successfully connected with the device, you can use the QR above or manually go to: **<http://192.168.1.1>**
- You will be prompted with a Time zone selection and a Wi-Fi login screen. Enter the SSID and password for the desired network you would want the device to be connected to.

<http://192.168.1.1>

Time zone

Wifi SSID

Wifi password



- “CONN” will be displayed when the Wi-Fi credentials are successfully received.
- “SYNC” will be displayed when the device is trying to synchronise the the time through the internet.



- If “Error” is displayed it means the synchronization failed due to failure in Wi-Fi credentials or a connection without internet.
- You can try again, go to step 5.1 on page 6



5.2 - Removing Wi-Fi connection:

Only works when a Wi-Fi connection is set, otherwise you will be prompted with step 5.3 on page 10.

- Press and hold the Left button for 2 seconds.
- “DEL” will be displayed.



- Use the Right button to toggle between “Y/N”.
- To confirm press and hold Left for 2 seconds.



5.3 - Setting time manually:

Only works when no Wi-Fi connection is set, otherwise you will be prompted with step 5.2 on page 9.

- Press and hold the Left button for 2 seconds.



- Use the Left button for hours and the Right button for minutes.
- To set the desired time press and hold the Left button for 2 seconds.

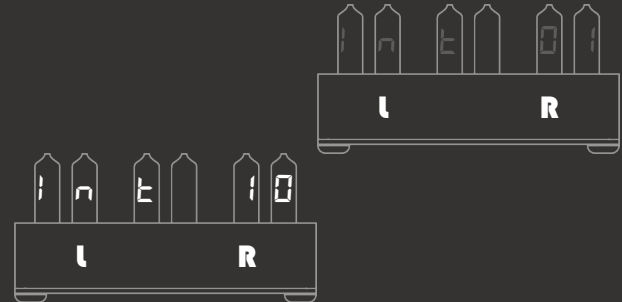


5.4 - Setting brightness intensity level:

- Press and hold the Right button for 2 seconds.

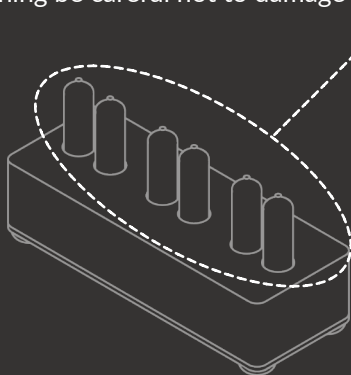


- Use Left - Right button to change intensity level.
- To set the selected intensity press and hold Right for 2 seconds.



6 - Cleaning and maintenance:

- Use a dry cloth or duster to carefully clean the exterior from dust
- Avoid using wet means of cleaning as much as possible
- While cleaning be careful not to damage the tubes



7 - Technical information:

• Operating temperature	Average indoor temp.
• Humidity	40% - 60%
• Voltage input	5V
• Power consumption, average	5W
• Dimension	121 x 46 x 60mm
• weight	400 g (approximate)



When turning on the device the firmware version will briefly be displayed.

8 - Warranty information:

The authorized qnop dealer or retailer where you purchased your TubeTime clock and/or original accessories will honour a warranty claim and/or provide warranty service.

Please return your device to your dealer or retailer to claim your warranty service.

In order to be eligible to receive warranty service, you must present your receipt of purchase or a comparable substitute proof of purchase bearing the date of purchase. The TubeTime should also clearly display the serial number. The warranty will not apply if the type or serial numbers on the product have been altered, deleted, removed, or made illegible.

What is not covered by the warranty:

- Defects or damage resulting from use of the Product in other than its normal and customary manner or by not following the instructions in this user manual.
- Defects or damage from misuse, accident or neglect.
- Defects of damage from improper testing, operation, maintenance, adjustment, or any alteration or modification of any kind.
- Breakage or damage to aerials unless caused directly by defects in material or workmanship.
- Products disassembled or repaired in such a manner as to adversely affect performance or prevent adequate inspection and testing to verify any warranty claim.
- Defects or damage due to moisture, liquid or spills.
- All externally exposed parts that are scratched or damaged due to normal use.
- Periodic maintenance and repair or replacement of parts due to normal usage, wear and tear.